



# 馬灣 1868

MA WAN 1868

Welcome to



## Island Arts Community

- Conservation
- Cultural and Creative
- Dining
- Tourism
- Art Retail

Hong Kong Ma Wan Park - Ma Wan 1868

33 Pak Yan Road, Ma Wan, New Territories, Hong Kong

+852 9013 0277

Free admission, Monday to Sunday 10:00-21:00

2/2026

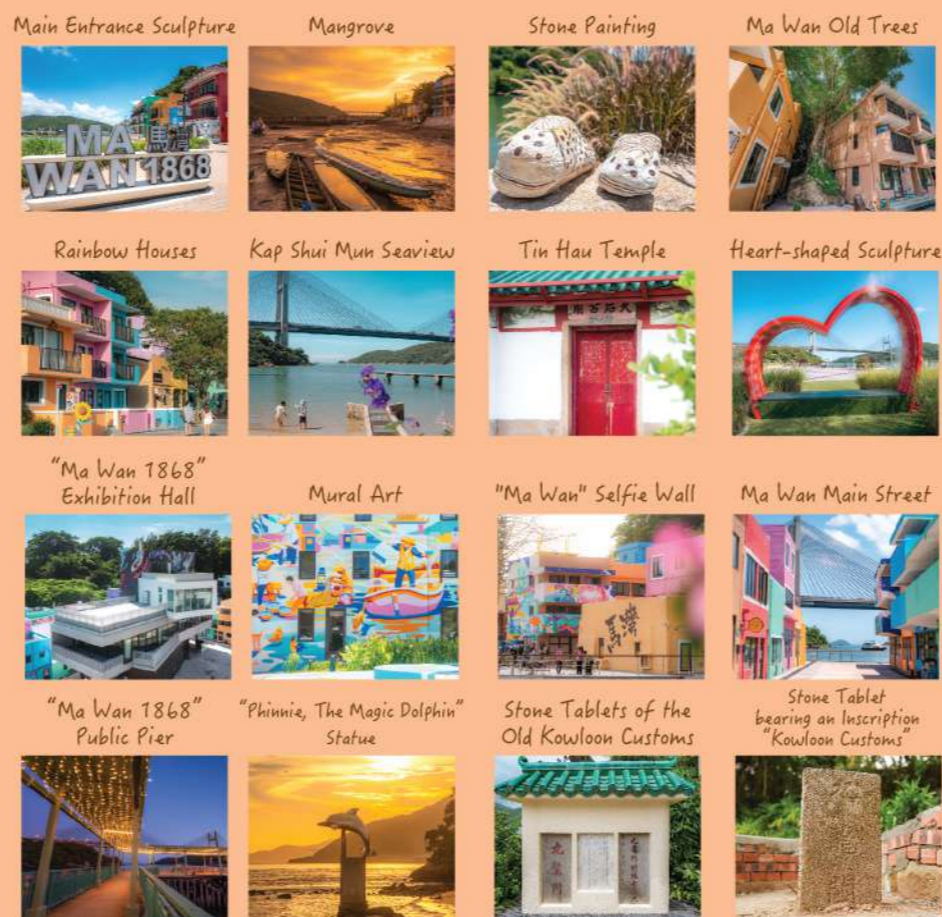
Learn More



English

## Ma Wan Park - Ma Wan 1868

Spanning approximately 500,000 square feet, the park blends natural scenery with the charm of a fishing village, offering pet-friendly activity spaces. It also features diverse creative studios, art retail shops, island sightseeing tours, and restaurants, providing visitors with a rich island tourism experience.



Step into "Ma Wan 1868," an art island, and slowly appreciate the murals, stone paintings, and sculptures created by various artists, feeling the island's rich artistic atmosphere.



Art & Craft	Lightgarden Workshop	Adnerb · Ob Florapy	Seventh of July	Something Special Florist	Abigail's Art
Sunflowers	KowloNeon & ThreeWitches	Just Be Art and Culture Workshop	Spinety Meaty	Lovesewmami	o-fish-ially
Angel Fong Ga Practice Room	Godspeed	6 senses	The Amazing Tent	The Garden	Black Tortoise
Performing Art	ecSinging	Omori Studio	Creative Characters	Kingdom Goshen Harvest Creative Arts Centre	Glorious Kingdom Arts & Theatre Pro
Song of Songs Harp School	Design Goods	Kairos	Alialand	AINLA	OMA
NOOKDECOR	Tse Sai Pei	HubZ	YYM	Illustration & Painting	imushstudios
Ceramics	Green Ceramic Studio	Atelier de la Bleue	Art And Chill Hub	Impurect Meows	True Heart Good Art
Wellness	Naturalive	one gardens	Metal Crafting	Shiba Sunset Studio	Noble Sketchbook
Mister Tea House	Joyful Space	Joyful Aromalife Studio	Kismet Productions	Glassy isle	MagMa Art STUDIO GALLERY
MOONOVO	MANJU	Island Hideout (Camp Site)	Farm the City (Urban Farm)	Store listings are subject to change without notice.	

BOOK A WORKSHOP





## Ma Wan Transportation Network Just 12 minutes from the city

### ● Bus Service

NR330	MTR Tsing Yi Station ↔ Park Island Get off at "Park Island Beach Commercial Complex" and walk 10 minutes.	About 12 minutes
NR331	MTR Tsuen Wan Station ↔ Ma Wan (Pak Yan Road/Noah's Ark) Get off at "Pak Yan Road" and walk 3 minutes.	About 23 minutes
NR331S	Tsuen Wan West Railway Station ↔ Ma Wan (Pak Yan Road/Noah's Ark) Get off at "Pak Yan Road" and walk 3 minutes.	About 18 minutes
NR332	Kwai Fong Metroplaza ↔ Park Island Get off at "Park Island Beach Commercial Complex" and walk 10 minutes.	About 18 minutes
NR334	Hong Kong International Airport ↔ Park Island Get off at "Park Island Beach Commercial Complex" and walk 10 minutes.	About 35 minutes
NR338S	Central Ferry Pier No.2 ↔ Park Island (Daytime route) Get off at "Park Island Beach Commercial Complex" and walk 10 minutes.	About 35 minutes
NR338	Central Ferry Pier No.2 ↔ Park Island (Overnight route) Get off at "Park Island Beach Commercial Complex" and walk 10 minutes.	About 35 minutes
230R	MTR Kowloon Station (Passing through Tsim Sha Tsui and MTR Nam Chong Station) ↔ Ma Wan (Pak Yan Road/Noah's Ark) Get off at "Pak Yan Road" and walk 3 minutes.	About 45 minutes

### ● Pet Bus Tour\* (Loop route)

PBS1	Yuen Long YOHO MALL → Tuen Mun V city → Ma Wan → Tsing Yi SPCA → Austin Road West → West Kowloon Cultural District Get off at "Pak Yan Road" and walk 3 minutes.
PBS2	Tseung Kwan O → Austin Road West → West Kowloon Cultural District → Olympic → Tsing Yi SPCA → Ma Wan Get off at "Pak Yan Road" and walk 3 minutes.
PB5	West Kowloon Cultural District → Nam Cheong V Walk → Tsing Yi SPCA → Ma Wan → DB North Plaza → DB Plaza Get off at "Pak Yan Road" and walk 3 minutes.

### ● Ferry Service

Central Ferry Pier No.2 ↔ Park Island Pier	Walking directions from "Park Island Pier" to "Ma Wan 1868" just 19 minutes.	About 25 minutes
Tsuen Wan Pier ↔ Park Island Pier	Walking directions from "Park Island Pier" to "Ma Wan 1868" just 19 minutes.	About 15 minutes

### ● Urban Taxi

Urban Taxi ↔ Ma Wan 1868/Noah's Ark	Get off at "Ma Wan Fire Station" and walk 3 minutes.
-------------------------------------	--

\*Routes are subject to change. Please reserve your seats via the KMB App1933. People in need may enter Ma Wan 1868 via Fong Yuen Road by means of vehicle.

## Nearby Restaurants

### ① Beach Commercial Complex

(10 minutes to walk from Ma Wan 1868.)

- Shop 1-3, 1/F - RIVA Bay Bar & Grill
- Shop 4-5, 1/F - Oma's Kitchen
- Shop 6, 1/F - La Rosabelle Bar & Grill
- Shop 7-8, 1/F - Coconut's Garden
- Shop 1A, 2/F - SOL Committee
- Shop 1B, 2/F - Little Mario's Pizzeria

### ② Shell Piazza

(17 minutes to walk from Ma Wan 1868.)

- Shop P1 - Little Seoul
- Shop P3 - Mamma Snacks
- Shop P5 - Saigon Baguette
- Shop P6-7 - Mo-Ikken Café
- Shop P8a - Seiso Teahouse
- Shop P8 - TPP Canteen
- Shop S1 & S1a - Wonderland Restaurant
- Shop S2 & S3 - Pacific Coffee

## Nearby Attractions

### Tung Wan Beach



### Heritage Center



### Tsing Ma Bridge



### Tai Leng Tau Hiking Trail



# Ma Wan Park: A Comprehensive Tourism and Cultural Destination

Ma Wan Park is a non-profit community facility. Developed in two phases, it is now a comprehensive tourism and cultural destination covering an area of 1.6 million square feet, combining the perfect experience of nature, education, conservation, cultural creativity, tourism and art retail. The first phase of the development brought together many popular attractions, including Hong Kong Noah's Ark, a theme park built in a 1:1 scale of Noah's Ark, and its connected Noah's Ark Hotel & Resort. Other first-phase highlights include the Nature Garden, a green park with themes combining nature, education, art and love, the Solar Pavilion featuring one of the largest civilian vacuum solar telescopes in Southeast Asia with a diameter of 350 mm, and the popular Solar Village Resort located in lush natural scenery. The second phase of the project is Ma Wan 1868, which conserves, restores and renovates village houses into a cultural and arts hub. By providing a variety of cultural and creative studios, workshops, art retail stores and restaurants, it offers a vibrant platform for creativity and cultural exchange between local residents and tourists. Each project within Ma Wan 1868 has its own unique characteristics and role, adding to its rich diversity and interest value.



## Dining options in the Ma Wan Park

### Ma Wan 1868

#### KNOCK KNOCK



#### Heato x Phare



#### I Love Paris



#### Harvest Restaurant



#### Jungle Fun Club



#### The Shack



#### Seiso Café



#### Noah's Kitchen



## Ma Wan Park Accommodation

### Ma Wan 1868 Resort



### Noah's Ark Hotel & Resort



### Island Hideout



### Solar Villas

